



# ILLINOIS MOTOR VEHICLE THEFT PREVENTION COUNCIL 2014 ANNUAL REPORT

A private and public partnership effectively  
combating motor vehicle theft and related  
crimes in Illinois since 1991.



## **To the Governor and the Members of the Illinois General Assembly:**

We are pleased to present the Illinois Motor Vehicle Theft Prevention Council 2014 Annual Report. This report describes the Council's accomplishments and challenges over the past year. The Council's partnership of public and private sectors is effectively fighting vehicle theft in Illinois.

Vehicle theft in Illinois has dropped 73 percent since 1991, when the Motor Vehicle Theft Prevention Act was passed by the General Assembly. From 1991 to 2013, the number of stolen vehicles decreased from 75,642 to 20,703. This is a decline of 54,939 vehicles, resulting in a savings of more than \$320 million in property losses.

Grant funds awarded by the Council have improved motor vehicle theft law enforcement by establishing and supporting multi-jurisdictional task forces, investigative teams, and other anti-theft efforts throughout the state. These programs have produced impressive results over the past 23 years, including:

- 36,702 criminal investigations initiated.
- 68,159 audits of vehicle-related businesses.
- 14,373 violation letters issued to audited businesses.
- 17,639 arrests.
- 7,069 convictions obtained.
- 41,212 stolen vehicles recovered, totaling approximately \$342 million.

Since inception, more than \$133 million has been granted to a variety of anti-theft programs and efforts which have resulted in the recovery of more than \$642 million in stolen vehicles and reduced theft rates. These efforts have resulted in a return of nearly \$5 for every \$1 spent.

We would like to thank the individuals who are dedicated and committed to the Council's mission to decrease motor vehicle theft in Illinois, and congratulate those carrying out this successful work.

Very respectfully,

John Maki  
Executive Director  
Illinois Criminal Justice Information Authority



**State of Illinois**  
**Bruce Rauner, Governor**

**Illinois Motor Vehicle Theft Prevention Council**

**Honorable Anita Alvarez**  
*Cook County State's Attorney*

**Garry McCarthy**  
*Superintendent, Chicago Police Department*

**Honorable Jerry Brady**  
*Peoria County State's Attorney*

**Donald L. Sauzek**

**Larry C. Cholewin**  
*MetLife Insurance Company*

**Leo Schmitz**  
*Illinois State Police*

**Brian B. Fengel**  
*Chief, Bartonville Police Department*

**Honorable Jesse White**  
*Illinois Secretary of State*

**Larry D. Johnson**  
*Farmers Insurance Group*

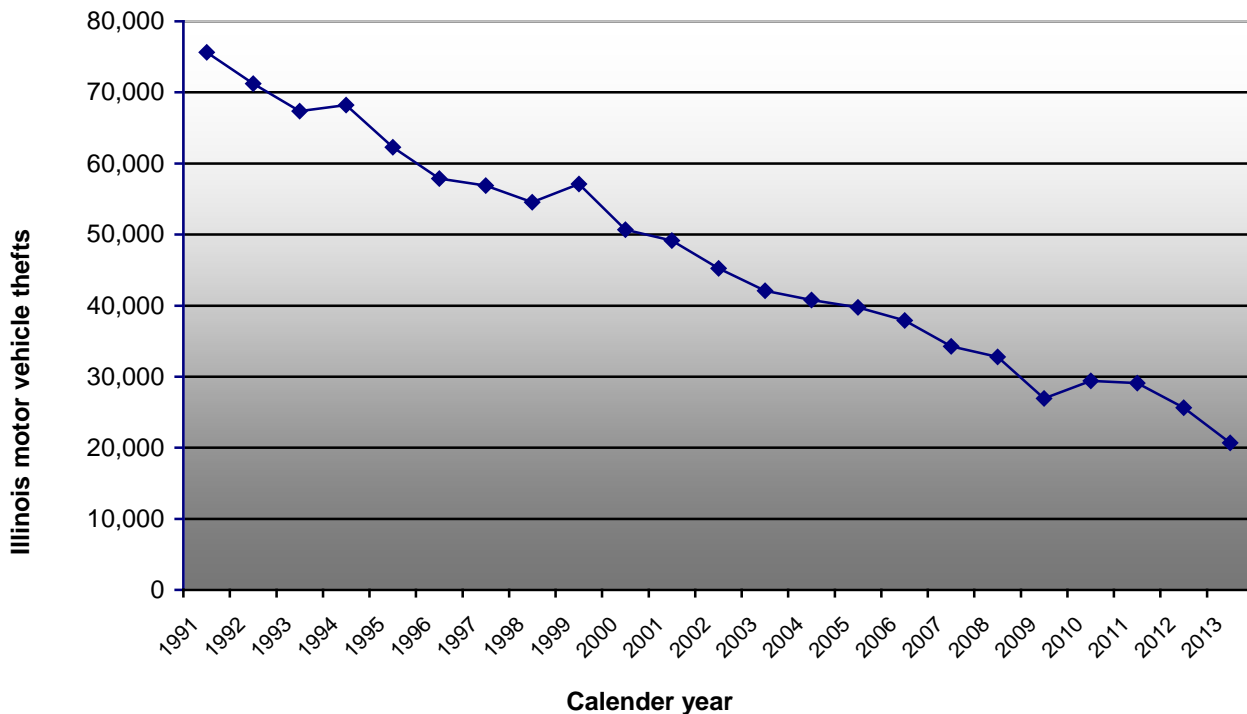
**Illinois Criminal Justice Information Authority**  
John Maki  
Executive Director

**Illinois Motor Vehicle Theft Prevention Council**  
300 West Adams Street, Suite 200  
Chicago, Illinois 60606-3997  
(312) 793-8550  
(312) 793-8422 (Fax)  
(312) 793-4170 (TDD)  
[www.icjia.state.il.us/mv](http://www.icjia.state.il.us/mv)

**TABLE OF CONTENTS**

**Council members ..... 5**  
**Grant review committee members ..... 7**  
**Motor vehicle theft trends in Illinois..... 8**  
**Overview of Council programs 1992-2014 ..... 9**  
**2014 Council programs..... 10**  
**Programs and participating agencies 2014..... 15**  
**Financial statement 2014 .....16**  
**Motor Vehicle Theft Prevention Trust Fund SFY91  
to SFY14.....17**  
**2014 Motor Vehicle Theft Prevention Trust Fund  
contributors .....18**  
**Illinois Motor Vehicle Theft Prevention Act ..... 20**

***Decrease in Illinois motor vehicle thefts  
1991-2013***



## *The Illinois Motor Vehicle Theft Prevention Council*

In 1991, the General Assembly established the Illinois Motor Vehicle Theft Prevention Council, an 11-member coalition of representatives from the insurance industry, state's attorneys, and law enforcement officers. The Council's mission is to reduce vehicle theft, insurance fraud, and motor vehicle theft-related crimes in Illinois.

The Illinois Motor Vehicle Theft Prevention Act requires insurance companies to pay \$1 into a special trust fund for each private passenger automobile insured for physical damage coverage. About \$6.5 million are annually collected and distributed by the Council. The funds are designated to support law enforcement programs that increase investigation and prosecution of vehicle theft-related crimes.

Members of the Council appoint Grant Review Committee members. The Grant Review Committee reviews grant proposals, budgets, and other information that must be brought before the Council.

### *Council members*

The following members serve on the Illinois Motor Vehicle Theft Prevention Council:

#### **Honorable Anita Alvarez**

*Cook County State's Attorney*

Anita Alvarez was sworn in as Cook County's first female and first Hispanic state's attorney in December 2008. Ms. Alvarez began her career in the Cook County State's Attorney's Office in 1986 and steadily worked her way up through the ranks, handling hundreds of felony cases ranging from homicide, narcotics, armed robbery, criminal sexual assaults and domestic violence. Prior to her election as state's attorney, Ms. Alvarez served as chief deputy state's attorney; chief of staff to the state's attorney; chief of the Special Prosecutions Bureau; deputy chief of the Narcotics Bureau, and supervisor of the Public Integrity Unit. Ms.

Alvarez is past president of the Chicago Bar Association.

#### **Honorable Jerry Brady**

*Peoria County State's Attorney*

Jerry Brady was appointed Peoria County State's Attorney in August 2011 and elected to that position in 2012. Prior to his appointment, Brady worked as an assistant state's attorney for Peoria County State's Attorney John Barra in traffic, misdemeanor, and felony divisions. After three years, he entered private practice with the law firms of Kelly & Brady, Brady & Flanagan, and Brady & Donahue. He has experience as a state public defender in felony court and as a federal public defender. He is a member of the Illinois and Peoria County Bar Associations. Brady is a graduate of Bradley University and St. Louis University School of Law.

#### **Larry C. Cholewin**

*MetLife Insurance Company*

Larry Cholewin is a regional manager with the Special Investigative Unit of MetLife Insurance Co. Mr. Cholewin's insurance investigation career with MetLife began as an investigator working a multi-state region and was promoted to supervisor and subsequently regional manager. His current position followed a successful career as a police officer with the Evanston Police Department. Mr. Cholewin is an active member of the International Association of Special Investigation Units and the International Association of Auto Theft Investigators.

#### **Brian B. Fengel**

*Chief, Bartonville Police Department*

Brian B. Fengel has been Bartonville Police Chief since 1998. He began his career with the Bartonville Police Department as an officer in 1990. He is a graduate of the 201<sup>st</sup> Session of the FBI National Academy. He served as a police officer assigned with the Secret Service at the 2002 Olympic Games in Salt Lake City, Utah.

**Larry D. Johnson***Farmers Insurance Group*

Larry D. Johnson is a special investigation unit manager responsible for SIU field operations in four states. He began his insurance career in 1985 as a multi-line claims representative in Springfield. He has held multiple positions in claims including claims investigation specialist, field claims supervisor, auto physical damage claims manager and national quality assurance claims consultant. Mr. Johnson has a bachelor's degree from Illinois State University and holds the insurance designations of INS, AIC, and SCLA. He is a member of the National Society of Professional Insurance Investigators.

**Garry McCarthy***Superintendent, Chicago Police Department*

Garry F. McCarthy was named Chicago Police Department Superintendent in June 2011. In this role, Superintendent McCarthy employs crime fighting and prevention strategies that reduced violence and crime under his leadership in New York City, N.Y., and Newark, N.J.

Superintendent McCarthy began his career in law enforcement with the New York Police Department (NYPD) in 1981, and steadily rose through the ranks. He was named NYPD Deputy Commissioner of Operations in 2000 and served as the principal crime strategist for the department. Under his leadership, NYPD saw a significant decline in homicides. That steady decline culminated in 2005 with its lowest murder rate since 1963. Superintendent McCarthy demonstrated strong leadership as a supervisor while commanding three separate precincts during a five-year period and bringing about significant positive changes. His success ultimately led him to a new assignment at the 70th precinct, where he helped diminish a double digit crime rate as well as decrease the number of complaints against police officers. These accomplishments garnered the praise of the U.S. Attorney's Office. In the fall of 2006, Superintendent McCarthy was chosen to lead the Newark Police Department, which achieved a 9 percent reduction in murder within his first

year. Along with this reduction, the Newark Police Department experienced additional improvements in efficiency and professionalism, including a 17 percent increase in arrests and diminished complaints against police officers.

**Donald L. Sauzek**

Donald L. Sauzek began his career with Country in 1973 as a field Claims Representative in Belleville, Illinois and retired in 2014. His career started as a multiline adjuster. He has held many positions in claims including claims specialist, field claims supervisor, auto physical damage manager and Manager Material Damage Claims/Property Claims. Mr. Sauzek holds the insurance designations of INS (Program in General Insurance) and AIC (Associate in Claims).

**Leo Schmitz***Director, Illinois State Police*

Leo P. Schmitz was appointed director of the Illinois State Police in February 2015. Mr. Schmitz's law enforcement career spans nearly 30 years, dating back to 1986, when he joined Chicago Police Department (CPD) as a police officer. He was later promoted to work on the Joint Robbery Task Force, a cooperative effort between CPD and the University of Illinois Police Department where he and his partners made over 500 robbery arrests. After being shot twice in 1996 in pursuit of a robbery suspect, whom he also apprehended, Mr. Schmitz was presented with the Illinois Law Enforcement Medal of Honor by then-Gov. James Edgar, the Chicago Superintendent's Award of Valor, and the Blue Star Award by the Chicago Police Department. Mr. Schmitz quickly rose through the ranks of the CPD and has received numerous awards for his service. In 2009, he was selected to lead CPD's Gang Enforcement Unit, which centralized all 50 district gang teams. His unit was recognized for its success with a Meritorious Citation. In January 2012, Mr. Schmitz was assigned to lead Chicago's Englewood District. The district saw a 44-

percent drop in homicide his first year and a 14 percent reduction in shootings. In December of 2012, he was promoted to deputy chief, a role in which he served until his CPD retirement in January 2015.

**Jesse White**

*Illinois Secretary of State*

Jesse White was first elected Illinois Secretary of State in 1998. Mr. White served as Cook County Recorder of Deeds from 1992 to 1998. Before being elected as recorder of deeds, he served in the Illinois General Assembly for 16 years. Sydney Roberts of the Secretary of State Police Department is Mr. White's designee to the Council.

**Council staff**

Sharyn Adams, *Research Analyst*  
Lisa Castillo, *Associate General Counsel & Council Secretary*  
Nancy Determann, *Accountant*  
Terrence Dugan, *Program Specialist*  
Luisa Salazar, *Vehicle Acquisition Specialist*  
Gregory Stevens, *Program Director*

**Grant Review Committee**

**Captain John Biffany**

*Illinois State Police*

Represents Illinois State Police  
Director Leo Schmitz

**Kathleen M. Boehmer**

*Deputy Chief, Chicago Police Department*

Represents Chicago Police Superintendent  
Garry McCarthy

**Larry Cholewin**

*MetLife Insurance Company*

**Sydney Roberts**

*Illinois Secretary of State Department of Police*

Represents Secretary of State Jesse White

**Brian B. Fengel**

*Chief, Bartonville Police Department*

**John Brassil**

*Cook County State's Attorney's Office*

Represents Cook County State's Attorney  
Anita Alvarez

## Motor vehicle theft trends in Illinois

### Vehicle thefts decline

The annual number of motor vehicle theft offenses in Illinois has declined 73 percent, from 75,642 in 1991 to 20,703 in 2013 (most current data available). Between 1991 and 2013, the vehicle theft rate declined 75 percent, from 656 to 161 offenses per 100,000 persons.

Figure 1 shows the number of vehicle theft offenses in 2013 for each county. Not including Cook County (15,544 thefts), the 10 counties with the most vehicle thefts were St. Clair (548), Winnebago (499), Will (388), DuPage (374), Lake (263), Peoria (230), Madison (228), Kane (226), Sangamon (206), and Champaign (147). Cook County vehicle thefts represented 75 percent of all vehicle thefts in Illinois. The areas where the six Council-funded task forces operate are outlined in black.

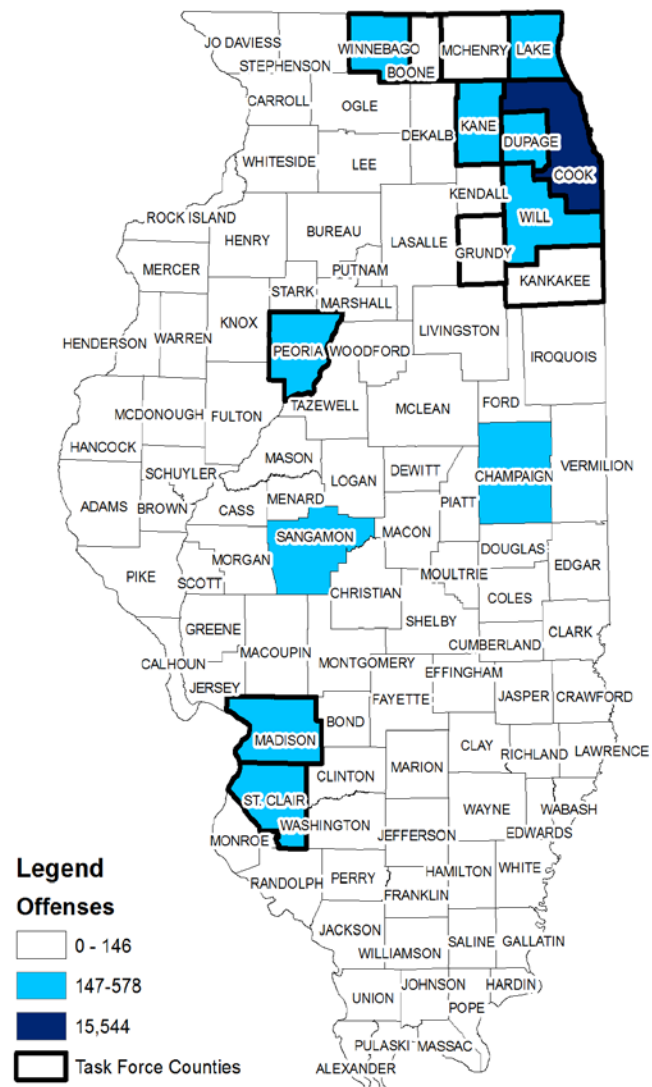
### Vehicle theft recoveries

Based on information from the Law Enforcement Agencies Data System, in 2014, 65 percent of the vehicles stolen in Illinois were recovered.

### Vehicle theft arrest and convictions

In 2013, there were 3,369 arrests for vehicle theft in Illinois. In 2009, the average sentence length of offenders committed to IDOC for vehicle theft was 4.1 years.

Figure 1  
2013 motor vehicle theft offenses





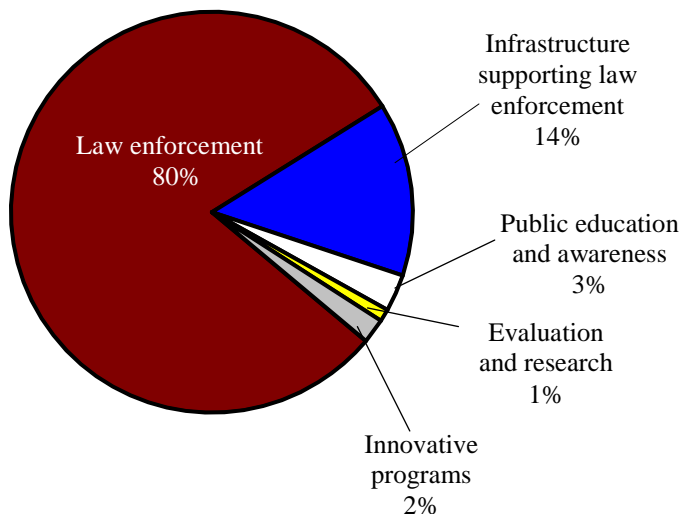
## Overview of Council programs 1992-2014

A variety of theft prevention efforts have been supported with MVTPC funding since the Council's inception in 1992. Funding emphasis has been placed upon law enforcement programs that enhance investigation and prosecution of vehicle theft-related crimes (*Figure 2*).

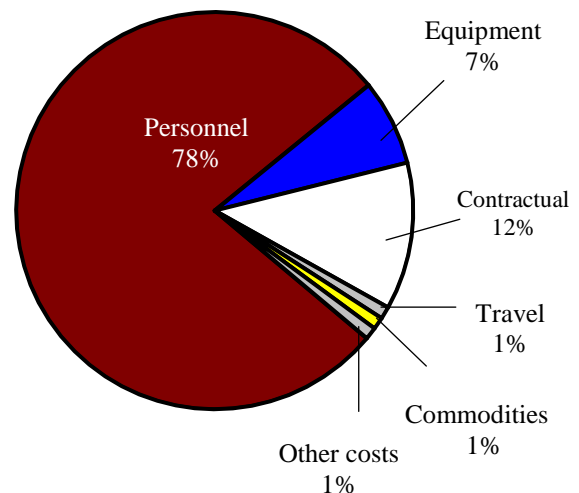
Since 1992, programs funded by the Council expended approximately \$133 million. Most funds pay the salaries and fringe benefits of personnel assigned to task forces and special investigative teams in the state (*Figure 3*). Remaining funds are utilized for equipment, commodities, travel, contractual agreements, and costs not covered by the other categories.

All programs are cooperative partnerships. Nearly all involve considerable support from participating agencies. Illinois State Police and the Secretary of State Police Department have assigned task force directors and personnel to these programs and absorbed costs for these personnel. The National Insurance Crime Bureau also has assigned agents to various efforts without requesting compensation. Illinois insurance companies have loaned approximately 525 vehicles for use by Council-funded law enforcement programs since the Council began.

**Figure 2**  
**Funding awarded by program area**  
**1992-2014**



**Figure 3**  
**Program expenditures**  
**1992-2014**



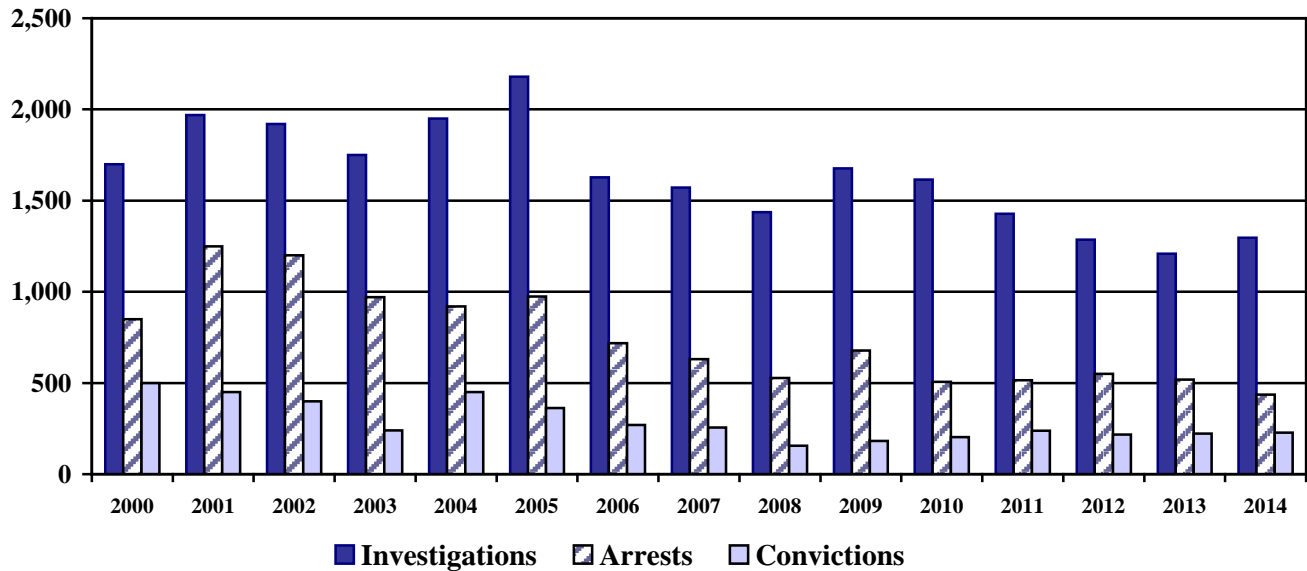
## 2014 Council programs

In 2014, the Council funded 11 programs, including six task forces, a specialized prosecution program, specialized investigations program, vehicle theft training program, vehicle maintenance program, and data intelligence program. There were 98 personnel supported by, or assigned to, Council-funded programs in 2014.

### Law enforcement

Six Council-funded task forces operated in 2014. Task forces consist of officers from both local and state law enforcement agencies. In 2014, 70 investigators and auditors were assigned to Council-funded task forces. During the year, the work of the task forces resulted in 1,297 investigations 436 arrests, and 227 convictions (*Figure 4*).<sup>1</sup> There were 1,335 vehicles recovered, valued at about \$20.8 million. In addition, task force officers were involved in public awareness and motor vehicle theft prevention activities in their areas.

**Figure 4**  
**Task force program activity**  
**2000-2014**



Source: Task Force Monthly Performance Reports

<sup>1</sup>Due to the time lapse between arrest and conviction, the number of convictions during a year does not directly reflect the number of arrests during the same year.

### **Greater Metropolitan Auto Theft Task Force**

Grantee: Village of Lemont

Amount awarded for 2014: \$783,531

Greater Metropolitan Auto Theft Task Force (GMAT) operates in DuPage, Kane, Lake, and McHenry counties and the northern and western outlying areas of Cook County. In a coordinated effort to identify and arrest offenders, officers work with local, county, and federal police agencies, and insurance companies. In 2014, GMAT conducted or assisted in 312 investigations resulting in 44 arrests. The task force referred 58 cases for prosecution that led to 45 convictions. GMAT also recovered 288 stolen vehicles worth an estimated \$4.8 million. In addition, GMAT assisted in the recovery of 151 vehicles worth approximately \$3.4 million.

### **Metro East Auto Theft Task Force**

Grantee: Belleville Police Department

Amount awarded for 2014: \$821,810

The Metro East Auto Theft Task Force (MEATTF) operates in Madison and St. Clair counties. The task force combats vehicle theft by working closely with the many police departments in the two counties, as well as Missouri's St. Louis Police Department and St. Louis County Police Department. In 2014, MEATTF conducted or assisted in 304 investigations resulting in 102 arrests. The task force referred 318 cases for prosecution that led to 71 convictions. The unit recovered 235 vehicles worth an estimated \$2.07 million and assisted in the recovery of 68 vehicles worth an estimated 640,000.

### **Northeast Metro Auto Theft Task Force**

Grantee: Illinois State Police

Amount awarded for 2014: \$616,098

The Northeast Metro Auto Theft Task Force (NEMAT) conducts enforcement operations to combat auto theft and insurance fraud in Cook County and in Chicago. They also assist federal, state, and local law enforcement agencies, perform undercover operations, provide training, and initiate investigations. In 2014, NEMAT initiated or assisted in 130 investigations resulting in 59 arrests. The task force referred 63 cases for prosecution that led to 28 convictions. The unit recovered 149 stolen vehicles worth an estimated \$4.4 million. In addition, NEMAT assisted in the recovery of 32 for an estimated \$680,000.

### **Northern Illinois Auto Theft Task Force**

Grantee: Winnebago County Sheriff's Office

Amount awarded for 2014: \$622,315

The Northern Illinois Auto Theft Task Force (NIATTF) continues to assist all local police departments and Illinois State Police District 16 in recovering and processing stolen vehicles. NIATTF covers Winnebago and Boone counties. In 2014, NIATTF launched or assisted in 166 investigations resulting in 83 arrests. The task force referred 76 cases for prosecution that led to 25 convictions. The unit

recovered 64 vehicles worth an estimated \$635,000 and assisted in the recovery of 68 vehicles worth approximately \$630,000.

**State and Local Auto Theft Enforcement Task Force**

Grantee: City of Peoria Police Department

Amount awarded for 2014: \$442,301

The State and Local Auto Theft Enforcement Task Force (SLATE) serves Peoria County. During 2014, SLATE conducted or assisted in 134 investigations resulting in 53 arrests. SLATE referred 45 of these cases for prosecution which led to 21 convictions. In addition, the task force recovered 97 vehicles worth an estimated \$1.1 million and assisted in the recovery of three vehicles worth nearly \$80,000.

**Tri-County Auto Theft Task Force**

Grantee: Joliet Police Department

Amount awarded for 2014: \$837,376

The Tri-County Auto Theft Task Force (TCAT) serves Will, Kankakee, and Grundy counties. The task force links the efforts of the Illinois State Police, the sheriff's offices of Will, Grundy, and Kankakee counties, and the police departments of Joliet, Bolingbrook, Romeoville, and Kankakee. In 2014, the task force initiated or assisted in 251 investigations resulting in 95 arrests. The task force referred 77 cases for prosecution which led to 37 convictions. The unit recovered 160 vehicles worth an estimated \$2.1 million. TCAT also assisted in the recovery of 20 vehicles for an estimated \$260,000.

## *Specialized prosecution*

### **Cook County Motor Vehicle Theft Prosecution Unit**

Grantee: Office of the Cook County State's Attorney

Amount awarded for 2014: \$823,644

The Cook County Motor Vehicle Theft Prosecution Unit is comprised of one supervising and four specially trained prosecutors, one state's attorney investigator and an administrative assistant. The five senior attorneys prosecute career auto thieves and individuals involved in chop shop operations, insurance fraud, organized street gang operations, carjacking, and illegal rebuilding and scrap dealing. The prosecution team vertically prosecutes targeted vehicle theft cases and related crimes in Cook County. In vertical prosecution, an attorney is assigned a case from submission through trial, a method considered critical for prosecuting vehicle theft cases. The Cook County State's Attorney investigator augments police work by tracking documents, locating witnesses, and conducting detailed background investigations.

The Cook County Motor Vehicle Theft Prosecution Unit accepted all of the 105 cases referred for prosecution, resulting in 108 convictions. The unit also obtained \$93,018 in restitution for victims in 2014.

## *Specialized investigation*

### **Secretary of State Special Audit Teams Program**

Grantee: Secretary of State, Department of Police

Amount awarded for 2014: \$1,135,024

The Secretary of State Special Audit Teams Program focuses on policing the marketplace for stolen vehicles and parts using special audit teams. There were four teams in operation during 2014 located in Chicago, Rockford, Peoria, and East St. Louis. The teams travel throughout Illinois monitoring salvage yards, rebuilders, repairers, insurance pools, and scrap processors for compliance with regulations governing record-keeping of vehicle and vehicle part transactions. They also perform reverse role sting operations to help identify dealers who may be engaged in illegal activities. The teams are comprised of 9 auditors, two auditor supervisors, and one correspondence operator.

In 2014, the teams performed 2,152 audits involving 24,093 vehicles and 2,979 essential vehicle parts. The team recovered 18 stolen vehicles for a total estimated value of \$156,000. There were 306 violation letters issued which resulted in 633 charges. Their enforcement actions resulted in 93 contraband vehicles identified worth an estimated value of \$1.3 million. A contraband vehicle is a vehicle which does not have a public VIN plate.

Additionally, the special audit teams identified and tracked 3,728 vehicles at insurance salvage pools and entered the vehicles into a title alert system. The vehicles identified were classified as flood damaged, high theft, burned, and beyond economic repair.

## *Support programs*

### **Insurance Vehicle Expense Fund Program**

Grantee: National Insurance Crime Bureau

Amount awarded for 2014: \$30,000

Insurance companies loan vehicles for use by Council-funded programs. In early 2014, insurance companies loaned 30 vehicles but reduced this amount to 11 vehicles by the end of the year. Most of these vehicles were recovered stolen vehicles obtained from insurance salvage pools in the Chicago metropolitan area. Program funds are used to repair these vehicles and obtain required Illinois titles and license plates. The Council, through the National Insurance Crime Bureau, has designated trust funds for repairing or purchasing parts for these vehicles to make them safe for operation. Task force officers are assigned these vehicles for surveillance and undercover activities.

### **Motor Vehicle Theft Intelligence Clearinghouse**

Grantee: Illinois State Police

Amount awarded for 2014: \$326,893

The Motor Vehicle Theft Intelligence Clearinghouse provides focused statewide analytical support for motor vehicle theft task forces and the Illinois law enforcement community. The unit consists of two criminal intelligence analysts and is directed by a Lieutenant assigned by the Illinois State Police. The Clearinghouse annually publishes the Illinois Motor Vehicle Theft Statewide Assessment, which includes theft and recovery trends, theft rates by county, and a geographic analysis of the motor vehicle theft problem during the previous year. The Clearinghouse prepares the Motor Vehicle Theft Program Quarterly Activity Summary, which provides to the Council performance reports of Council funded entities.

The Clearinghouse processed 342 requests for information in 2014, which included intelligence summaries, statistical estimates, analytical charts, intelligence alerts, geographic maps, and presentations. Analytical assessments were prepared identifying theft patterns for targeted enforcement efforts. Phone record, link association, and frequency distribution were also prepared in response to various complex tactical investigations conducted by the motor vehicle theft task forces. A *Daily Briefing* emphasizing the importance of proper theft and recovery data entry was produced. The Clearinghouse also provided instruction during the motor vehicle theft Advanced Investigator's training courses.

### **Motor Vehicle Theft Investigation Training Program**

Grantee: Illinois State Police

Amount awarded for 2014: \$51,964

The Motor Vehicle Theft Investigation Training Program is administered by the Illinois State Police. The goal of the program is to increase awareness and understanding of motor vehicle theft in the law enforcement community and the insurance industry in Illinois. The program offers classes for investigators, patrol officers, and insurance industry officials. The training classes cover important characteristics of vehicle theft cases and investigation techniques specific to vehicle theft-related cases. In 2014, 24 training sessions were conducted totaling approximately 312 hours of instruction presented to 614 local, county, state, and motor vehicle theft prevention task force and insurance investigators.

## *Programs and participating agencies 2014*

### **Greater Metropolitan Auto Theft Task Force**

1 Illinois State Police Master Sergeant  
1 Illinois State Police Special Agent  
2 Hoffman Estates Officers  
1 DuPage County State's Attorney's Officer  
1 Warrenville Officer  
1 DuPage County Sheriff's Deputy/Officer  
1 Elk Grove Village Officer  
2 Buffalo Grove Police Officers  
1 Investigative Support Specialist  
1 Administrative Assistant

### **Metro East Auto Theft Task Force**

1 Belleville Police Department Officer  
1 Granite City Police Department Officer  
1 East St. Louis Police Department Officer  
1 Collinsville Police Department Officer  
1 Columbia Police Department Officer  
1 Madison County Sheriff's Department Officer  
1 Illinois State Police Officer  
2 St. Clair County Sheriff's Department Officers  
1 S.I.U. Edwardsville Police Department Officer  
1 Madison County Assistant State's Attorney  
1 St. Clair County Assistant State's Attorney  
1 Fiscal Officer/Office Manager  
1 Secretary

### **Motor Vehicle Theft Intelligence Clearinghouse**

2 Illinois State Police Criminal Intelligence Analysts II

### **Motor Vehicle Theft Prosecution Unit**

5 Cook County Assistant State's Attorneys  
1 Cook County State's Attorney Investigator  
1 Cook County State's Attorney Administrative Assistant

### **Secretary of State – Special Audit Team**

9 Auditors  
2 Auditor Supervisors  
1 Correspondence Operator

### **Motor Vehicle Investigation Training Program**

1 Illinois State Police Commander  
1 Illinois State Police Lieutenant  
1 Illinois State Police Master Sergeant  
1 Administration Assistant I  
1 Fiscal Clerk

### **Northeast Metro Auto Theft Task Force**

1 Illinois State Police Master Sergeant  
1 Illinois State Police Special Agent  
1 Chicago Police Department Officer  
2 Cook County State's Attorney Investigators  
1 Stone Park Police Department Officer  
1 Willow Springs Police Department Officer  
1 Illinois Secretary of State Police Officer  
1 National Insurance Crime Bureau Investigators  
2 Administrative Assistants

### **Northern Illinois Auto Theft Task Force**

1 Illinois State Police Master Sergeant  
1 Cherry Valley Police Department Officer  
1 Belvidere Police Department Officer  
1 Boone County Sheriff's Department Officer  
3 Winnebago County State's Attorney Investigators  
1 Winnebago County Assistant State's Attorney  
1 Winnebago County State's Attorney Secretary  
1 Boone County Assistant State's Attorney Investigator  
1 Boone County Assistant State's Attorney

### **State and Local Auto Theft Enforcement**

1 Illinois State Police Master Sergeant  
2 Peoria County Deputies  
2 Peoria County Police Officers  
1 Woodford County Deputy  
1 Peoria County Assistant State's Attorney  
1 Office Assistant

### **Tri-County Auto Theft Task Force**

1 Illinois State Police Master Sergeant  
1 Illinois State Police Sergeant  
2 Joliet City Police Department Officers  
1 Grundy County Deputy  
1 Will County Deputy  
1 Lemont Police Department Officer  
1 Romeoville Police Department Officer  
1 Bolingbrook Police Department Officer  
2 Kankakee County Deputies  
1 Kankakee City Police Department Officer  
1 Secretary  
1 Will County Assistant State's Attorney  
1 Kankakee County Assistant State's Attorney  
1 National Insurance Crime Bureau Agent

**TOTAL: 98** personnel supported by or assigned to Council-funded programs.

*Financial statement 2014*

**Motor Vehicle Theft Prevention Trust Fund**

Statement of revenues, expenditures, and fund balance for state fiscal year 2014  
(July 1, 2013 through June 30, 2014)

REVENUES:	
Insurance company payments	\$6,620,438
Interest income	\$17,240
<b>TOTAL</b>	<b>\$6,637,678</b>
EXPENDITURES:	
Transfers from trust fund	\$68,152
Administrative	\$473,301
Programs <sup>2</sup>	\$6,601,816
<b>TOTAL</b>	<b>\$7,143,269</b>

BALANCE:	
BEGINNING BALANCE	\$6,084,256
ENDING BALANCE	\$5,578,665

*Motor Vehicle Theft Prevention Council program grant awards*

	2012	2013	2014
Greater Metro Area Auto Theft Task Force	\$752,515	\$767,009	\$782,800
Insurance Vehicle Expense Fund Program	\$41,590	\$19,436	\$19,341
Metro-East Auto Theft Task Force	\$752,810	\$752,751	\$816,897
Motor Vehicle Theft Intelligence Clearinghouse	\$277,859	\$328,038	\$283,588
Motor Vehicle Theft Investigation Training	\$51,964	\$43,488	\$38,983
Motor Vehicle Theft Prosecution Unit	\$802,644	\$823,644	\$823,644
Northeast Metro Auto Theft Task Force	\$536,991	\$578,344	\$613,989
Northern Illinois Auto Theft Task Force	\$621,595	\$623,315	\$622,315
Secretary of State Special Audit Teams Program	\$1,382,036	\$1,237,356	\$1,112,495
State and Local Auto Theft Enforcement	\$405,113	\$401,825	\$439,110
Tri-County Auto Theft Task Force	\$841,434	\$822,808	\$834,403
<b>TOTAL</b>	<b>\$6,466,551</b>	<b>\$6,398,014</b>	<b>\$6,387,565</b>

<sup>2</sup>Funds distributed during the fiscal year may differ from the total award received.



*Motor Vehicle Theft Prevention Trust Fund totals SFY91 to SFY14*

	SFY 1991 - 2010	SFY 2011	SFY 2012	SFY 2013	SFY 2014	TOTALS
<b>REVENUE</b>						
Insurance company payments	116,024,343	6,420,038	6,497,455	6,524,017	6,620,438	142,086,291
Beat Auto Theft Program revenue	7,585	0	0	0	0	7,585
Interest on trust fund	3,686,263	30,240	19,278	17,334	17,240	3,770,355
Subtotal	119,718,191	6,450,278	6,516,733	6,541,351	6,637,678	145,864,231
<b>EXPENDITURES</b>						
Transfers from trust fund	(6,929,466)	0	0	0	(68,152)	(6,997,618)
Administrative expenditures	(5,607,730)	(255,081)	(308,881)	(450,652)	(473,301)	(7,095,645)
Grantee expenditures	(101,828,701)	(5,702,635)	(5,662,156)	(6,396,995)	(6,601,816)	(126,192,303)
Subtotal	(114,365,897)	(5,957,716)	(5,971,037)	(6,847,647)	(7,143,269)	(140,285,566)
Revenue less Expenditures	5,352,294	492,562	545,696	(306,296)	(505,591)	5,578,665
<b>TRUST FUND BALANCE</b>	5,352,294	5,844,856	6,390,552	6,084,256	5,578,665	5,578,665

Note: Figures in parentheses are negative.

## *A special thanks to the 2014 Motor Vehicle Theft Prevention Trust Fund contributors*

1<sup>st</sup> Auto & Casualty Insurance Company  
21<sup>st</sup> Century (AIG) Centennial Insurance  
21<sup>st</sup> Century North American  
21<sup>st</sup> Century (AIG) Preferred Insurance Co.  
21<sup>st</sup> Century (AIG) Premier Insurance Co.  
Acuity, A Mutual Insurance Company  
Addison Insurance Company  
Affirmative Insurance Company  
AIG Casualty Company  
AIOI Nissay Dowa Ins. Co. of America  
Allied Property & Casualty Insurance Co.  
Allmerica Financial Alliance Insurance Co.  
Allmerica Financial Benefit Insurance Co.  
Allstate Fire & Casualty Insurance Company  
Allstate Indemnity Company  
Allstate Insurance Company  
Allstate Property & Casualty Insurance Co.  
Alpha Property & Casualty Insurance Co.  
AMCO Insurance Company  
American Access Casualty Company  
American Alliance Casualty Company  
American Bankers Insurance Co. of Florida  
American Family Mutual Insurance Co.  
American Fire & Casualty Company  
American Freedom Insurance Company  
American Heartland Insurance Company  
American Modern Home Insurance Co.  
American National General Insurance Co.  
American National Property & Casualty Co.  
American Reliable Insurance Company  
American Select Insurance Company  
American Standard Insurance of Wisconsin  
American Zurich Insurance Company  
Amica Mutual Insurance Company  
Apollo Casualty Company  
Auto Club Family Insurance Company  
Auto Club Insurance Association  
Auto Owners Insurance Company  
Automobile Club Interinsurance Exchange  
Badger Mutual Insurance Company  
Bankers Standard Insurance Company  
Bristol West Insurance Company  
California Casualty Gen. Ins. Co. of Oregon  
Capitol Indemnity Corporation  
Central Mutual Insurance Company  
Charter Indemnity Company  
Charter Oak Fire Insurance Company  
Chubb Indemnity Insurance Company  
Chubb National Insurance Company  
Cincinnati Insurance Company  
Citizens Insurance Company of America  
Citizens Insurance Company of Illinois  
Columbia Mutual Insurance Company  
Companion Property & Casualty Ins. Co.  
Conifer Insurance Company  
Consumers Insurance USA, Inc.  
Country Casualty Insurance Company  
Country Mutual Insurance Company  
Country Preferred Insurance Company  
Cumis Insurance Society, Inc.  
Dairyland Insurance Company  
Delphi Casualty Company  
Depositors Insurance Company  
Economy Fire & Casualty Company  
Economy Preferred Insurance Company  
Economy Premier Assurance Company  
Electric Insurance Company  
EMC Property & Casualty Company  
Elephant Insurance Company  
Emcasco Insurance Company  
Employers Mutual Casualty Company  
Encompass Home and Auto Insurance Co.  
Encompass Insurance Company of America  
Encompass Property & Casualty Company  
Erie Insurance Company  
Erie Insurance Exchange  
Essentia Insurance Company  
Esurance Insurance Company  
Esurance Property and Casualty Ins. Co.  
Falcon Insurance Company  
Farmers Automobile Insurance Association  
Farmers Mutual Hail Insurance Co. of Iowa  
Federal Insurance Company  
Financial Indemnity Company  
Fireman's Fund Insurance Company  
First Acceptance Insurance Company  
First Chicago Insurance Company  
First Liberty Insurance Corporation  
Florists' Mutual Insurance Company  
Foremost Insurance Company  
Founders Insurance Company  
Garrison Property & Casualty Insurance Co.  
Geico Casualty Company  
Geico General Insurance Company  
Geico Indemnity Company  
General Casualty Company of Illinois  
General Casualty Company of Wisconsin  
Goodville Mutual Casualty Company  
Government Employees Insurance Co.  
Grange Indemnity Insurance Company  
Grange Mutual Casualty Company  
Great Northern Insurance Company  
Grinnell Mutual Reinsurance Company  
Grinnell Select Insurance Company  
GuideOne America Insurance Company  
GuideOne Elite Insurance Company  
GuideOne Mutual Insurance Company  
Hallmark Insurance Company  
Hallmark (State Auto) National Ins. Co.  
Harleysville Lake States Insurance Co.  
Hartford Accident & Indemnity Company  
Hartford Casualty Insurance Company  
Hartford Fire Insurance Company  
Hartford Insurance Company of Illinois  
Hartford Underwriters Insurance Company  
Hastings Mutual Insurance Company  
Horace Mann Insurance Company  
Horace Mann Property & Casualty Ins.  
IDS Property Casualty Insurance Company  
Illinois Emcasco Insurance Company  
Illinois Farmers Insurance Company  
IMT Insurance Company  
Infinity Assurance Insurance Company  
Infinity Auto Insurance Company  
Infinity Casualty Insurance Company  
Infinity Insurance Company  
Insurance Company of the State of PA  
Interstate Bankers Casualty Company  
Iowa Mutual Insurance Company  
Ironshore Indemnity Inc.  
Kemper Independence Insurance Company  
Liberty Insurance Corporation  
Liberty Mutual Fire Insurance Company  
Lighthouse Casualty Company  
LM General Insurance Company  
LM Insurance Corporation  
Loya Insurance Company  
Madison Mutual Insurance Company  
Massachusetts Bay Insurance Company  
Member Select Insurance Company  
Mendakota Insurance Company  
Merastar Insurance Company  
Meridian Security Insurance Company  
Mercury Insurance Company of Illinois  
Metropolitan Casualty Insurance Company  
Metropolitan General Insurance Company  
Metropolitan Group Property & Casualty  
Metropolitan Property & Casualty Company  
Michigan Millers Mutual Insurance Company  
Midwest Family Mutual Insurance Co.  
National General Assurance Company  
National General Insurance Company  
National General Insurance Online Inc.  
National Heritage Insurance Company  
National Interstate Insurance Company  
National Surety Corporation  
Nationwide Agribusiness Insurance Company  
Nationwide Assurance Company  
Nationwide Insurance Company of America  
Nationwide Mutual Fire Insurance Company  
Nationwide Mutual Insurance Company  
NIPPONKOA Insurance Company, Limited  
Ohio Casualty Insurance Company  
Omni Indemnity Company  
Owners Insurance Company  
Pacific Indemnity Company  
Pekin Insurance Company  
Pharmacists Mutual Insurance Company  
Philadelphia Indemnity Insurance Company  
Phoenix Insurance Company  
Plaza Insurance Company  
Progressive Direct Insurance Company  
Progressive Northern Insurance Company  
Progressive Universal Ins. Co. of Illinois  
Property & Casualty Insurance of Hartford  
Response Insurance Company  
Response Worldwide Insurance Company  
Rockford Mutual Insurance Company  
Safe Auto Insurance Company  
Safeco Insurance Company of Illinois  
Sagamore Insurance Company  
Secura Insurance  
Secura Supreme Insurance Company  
Selective Insurance Co. of South Carolina  
Selective Insurance Co. of the Southeast  
Sentinel Insurance Company

Sentry Insurance, A Mutual Company  
Sequoia Insurance Company  
Shelter General Insurance Company  
Shelter Mutual Insurance Company  
Standard Fire Insurance Company  
Standard Mutual Insurance Company  
State Auto Property & Casualty Insurance  
State Automobile Mutual Insurance Co.  
State Farm Fire and Casualty Company  
State Farm Mutual Automobile Ins. Co.  
Stillwater Property & Casualty Ins. Co.  
Teachers Insurance Company  
Technology Insurance Company  
Travelers Casualty Insurance Co. of America  
Travelers Commercial Insurance Company  
Travelers Home & Marine Insurance Co.  
Travelers Indemnity Company  
Travelers Indemnity Company of America  
Travelers Indemnity Company of CT  
Travelers Property Casualty Co. of America  
Trumbull Insurance Company  
Trustgard Insurance Company  
Twin City Fire Insurance Company

United Automobile Insurance Company  
United Equitable Insurance Company  
United Fire & Casualty Company  
United Services Automobile Association  
United States Liability Insurance Company  
Unitrin Auto & Home Insurance Company  
Unitrin Direct Insurance Company  
Unitrin Direct Property & Casualty Co.  
Unitrin Preferred Insurance Company  
USAA Casualty Insurance Company  
USAA General Indemnity Company  
Victoria Fire and Casualty Company  
Victoria Select Insurance Company  
Vigilant Insurance Company  
Viking Insurance Company of Wisconsin  
Wadena Insurance Company  
Wesco Insurance Company  
West American Insurance Company  
West Bend Mutual Insurance Company  
Westfield Insurance Company  
Westfield National Insurance Company  
Yosemite Insurance Company  
Young America Insurance Company

# The Illinois Motor Vehicle Theft Prevention Act

## 20 Illinois Compiled Statutes 4005

**4005/1. Short title.** This Act shall be known as the Illinois Motor Vehicle Theft Prevention Act.

**4005/2. Purpose.** The purpose of this Act is to prevent, combat and reduce motor vehicle theft in Illinois; to promote and support motor vehicle theft law enforcement, prosecution and administration of motor vehicle theft laws by establishing statewide capabilities for and coordination of financial resources.

**4005/3. Definitions.** As used in this Act

- (a) "Authority" means the Illinois Criminal Justice Information Authority.
- (b) "Council" means the Illinois Motor Vehicle Theft Prevention Council, established within the Authority by this Act.
- (c) "Trust Fund" means the Motor Vehicle Theft Prevention Trust Fund.

**4005/4. Motor Vehicle Theft Prevention Council—Members—Chairman—Terms—Meetings.** There is hereby created within the Authority an Illinois Motor Vehicle Theft Prevention Council, which shall exercise its power, duties and responsibilities independently of the Authority. There shall be 11 members of the Council consisting of the Secretary of State or his designee, the Director of the Department of State Police, the State's Attorney of Cook County, the Superintendent of the Chicago Police Department, and the following 7 additional members, each of whom shall be appointed by the Governor: a state's attorney of a county other than Cook, a chief executive law enforcement official from a jurisdiction other than the City of Chicago, 5 representatives of insurers authorized to write motor vehicle insurance in this State, all of whom shall be domiciled in this State.

The Governor from time to time shall designate the Chairman of the Council from the membership. All members of the Council appointed by the Governor shall serve at the discretion of the Governor for a term not to exceed 4 years. The initial appointed members of the Council shall serve from January 1, 1991 until the third Monday in January, 1995 or until their successors are appointed. The Council shall meet at least quarterly.

**4005/5. Compensation of members.** Members of the Council shall serve without compensation. All members shall be reimbursed for reasonable expenses incurred in connection with their duties.

**4005/6. Personnel.** The Executive Director of the Authority shall employ, in accordance with the provisions of the Illinois Personnel Code, such administrative, professional, clerical, and other personnel as may be required and may organize such staff as may be appropriate to effectuate the purposes of this Act.

**4005/7. Powers and duties of council.** The Council shall have the following powers, duties and responsibilities:

- (a) To apply for, solicit, receive, establish priorities for, allocate, disburse, contract for, and spend funds that are made available to the Council from any source to effectuate the purposes of this Act.
- (b) To make grants and to provide financial support for federal and State agencies, units of local government, corporations, and neighborhood, community and business organizations to effectuate the purposes of this Act.
- (c) To assess the scope of the problem of motor vehicle theft, including particular areas of the State where the problem is greatest and to conduct impact analyses of State and local criminal justice policies, programs, plans and methods for combating the problem.
- (d) To develop and sponsor the implementation of statewide plans and strategies to combat motor vehicle theft and to improve the administration of the motor vehicle theft laws and provide an effective forum for identification of critical problems associated with motor vehicle theft.
- (e) To coordinate the development, adoption and implementation of plans and strategies relating to interagency or intergovernmental cooperation with respect to motor vehicle theft law enforcement.
- f) To promulgate rules or regulations necessary to ensure that appropriate agencies, units of government, private organizations and combinations thereof are included in the development and implementation of strategies or plans adopted pursuant to this

Act and to promulgate rules or regulations as may otherwise be necessary to effectuate the purposes of this Act.

(g) To report annually, on or before April 1, 1992 to the Governor, General Assembly, and, upon request, to members of the general public on the Council's activities in the preceding year.

(h) To exercise any other powers that are reasonable, necessary or convenient to fulfill its responsibilities, to carry out and to effectuate the objectives and purposes of the Council and the provisions of this Act, and to comply with the requirements of applicable federal or State laws or regulations; provided, however, that such powers shall not include the power to subpoena or arrest.

**4005/8. Motor Vehicle Theft Prevention Trust Fund.** (a) A special fund is created in the State Treasury known as the Motor Vehicle Theft Prevention Trust Fund, which shall be administered by the Executive Director of the Authority at the direction of the Council. All interest earned from the investment or deposit of monies accumulated in the Trust Fund shall, pursuant to Section 4.1 of the State Finance Act, be deposited in the Trust Fund.

(b) Money deposited in this Trust Fund shall not be considered general revenue of the State of Illinois.

(c) Money deposited in the Trust Fund shall be used only to enhance efforts to effectuate the purposes of this Act as determined by the Council and shall not be appropriated, loaned or in any manner transferred to the General Revenue Fund of the State of Illinois.

(d) Prior to April 1, 1991, and prior to April 1 of each year thereafter, each insurer engaged in writing private passenger motor vehicle insurance coverages which are included in Class 2 and Class 3 of Section 4 of the Illinois Insurance Code [FN2] as a condition of its authority to transact business in this State, may collect and shall pay into the Trust Fund an amount equal to \$1.00, or a lesser amount determined by the Council, multiplied by the insurer's total earned car years of private passenger motor vehicle insurance policies providing physical damage insurance coverage written in this State during the preceding calendar year.

(e) Money in the Trust Fund shall be expended as follows:

(1) To pay the Authority's costs to administer the Council and the Trust Fund, but for this purpose in an amount not to exceed ten percent in any one fiscal year of the amount collected pursuant to paragraph (d) of this Section in that same fiscal year.

(2) To achieve the purposes and objectives of this Act, which may include, but not limited to, the following:

(A) To provide financial support to law enforcement and correctional agencies, prosecutors, and the judiciary for programs designed to reduce motor vehicle theft and to improve the administration of motor vehicle theft laws.

(B) To provide financial support for federal and State agencies, units of local government, corporations and neighborhood, community or business organizations for programs designed to reduce motor vehicle theft and to improve the administration of motor vehicle theft laws.

(C) To provide financial support to conduct programs designed to inform owners of motor vehicles about the financial and social costs of motor vehicle theft and to suggest to those owners methods for preventing motor vehicle theft.

(D) To provide financial support for plans, programs and projects designated to achieve the purposes of this Act.

(f) Insurers contributing to the Trust Fund shall have a property interest in the unexpended money in the Trust Fund, which property interest shall not be retroactively changed or extinguished by the General Assembly.

(g) In the event the Trust Fund were to be discontinued or the Council were to be dissolved by act of the General Assembly or by operation of law, then, notwithstanding the provisions of Section 5 of the State Finance Act, any balance remaining therein shall be returned to the insurers writing private passenger motor vehicle insurance in proportion to their financial contributions to the Trust Fund and any assets of the Council shall be liquidated and returned in the same manner after deduction of administrative costs.

**4005/12. Repealer.** Sections 1 through 9 and Section 11 are repealed January 1, 2016. P.A. 97-141, eff. 7-14-11.

(Source: Public Act 86-1408, effective January 1, 1991. Amended by Public Act 89-277, effective August 10, 1995, Public Act 91-85, effective July 9, 1999, and Public Act 93-172, effective July 10, 2003. Amended by Public Act 95-0212, effective January 1, 2008)

---

**ICJIA**

---

**Illinois Criminal Justice Information Authority**

**300 West Adams Street, Suite 200**

**Chicago, Illinois 60606**

**Telephone: 312-793-8550**

**TDD: 312-793-4170**

**Fax: 312-793-8422**

**[www.icjia.state.il.us](http://www.icjia.state.il.us)**